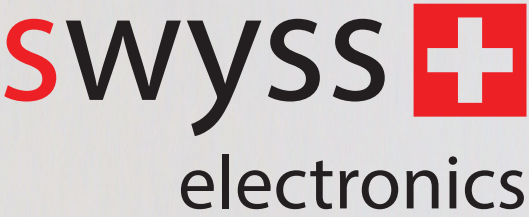
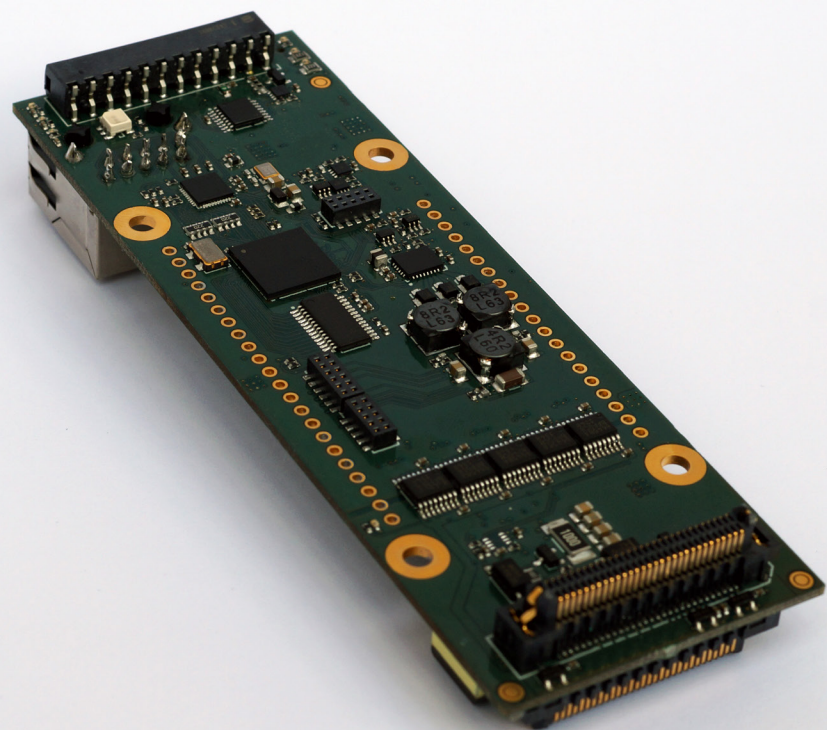


PROPULSION

Head Interface Board for Fujifilm Dimatix Samba™



Key Features

Blazingly Fast	Full Bandwidth 700MBit/sec Data rate made possible by 1000Base-T Gigabit Network Interface for perfect performance and scalability - No additional Data Distribution boards needed. (UDP and IP/Mac protocol options)
Highly Precise	14-Bit Waveform Processing with 2.4 mV precision waveform generation with 16.6MHz sampling rate Full scale flexible waveform processing for complex high precision waveform shapes.
Revolutionary Architecture	High Performance Multicore Processor Architecture. No FPGA usage - therefore easy and flexible upgrade and implementation of application-specific features.
Powerful Synchronisation	RS422 Encoder Input with Index and 5V Encoder Supply 24V product detect input
Full Printhead Performance	Full support of printhead fire frequency range up to 150kHz and up to 7 drop sizes in real-time data streaming
Robust	Digital Programmable Hardware Current Protection
Extremely Compact	Only 41mm x 120mm x 20mm with a weight of 39g
Water Cooled	Stable temperatures because of effective water-cooling system integrated in the full-aluminium casing.
Open Licensing	Customer open licensing of software and hardware possible
Extended Compatibility	Support of the Fuji Samba™ GMA printhead with additional connector cable

* Preliminary data - Subject to errors and modifications

The Eonyk Propulsion Plattform is a highly advanced Printhead driver board system for Fujifilm Dimatix Samba Printheads. It offers unmatched performance and scalability and offers the customer a very easy to integrate complete solution for all multipass and singlepass printing applications. The board offers the smallest system size on the market and therefore saves a lot of mechanical space on the printing machine. We offer a complete Printengine SDK and also complete turnkey solutions for several machine types as well as our GPU based Eonyk Realtime RIP engine.

swyss electronics GmbH

Wingertstr. 28 | 8893 Flums Hochwiese | SCHWEIZ | +41 78 6690304 | office@swyss.net | www.swyss.net

Technical Specifications

Supported Printheads	Fujifilm Dimatix Samba™ 1200 dpi (Support of the Fuji Samba™ GMA printhead with additional connector cable)
Dimensions	Board: (W) 41mm x (H) 120mm x (D) 20mm Case: (W) 43mm x (H) 120mm x (D) 33mm
Weight	39g (board alone), 165g (casing)
Cooling system	Aluminium casing with integrated water cooling
Power Requirements	15V board supply and 40V/50V amplifier module supply

* Preliminary data - Subject to errors and modifications

For more information visit www.swyss.net/propulsion

